

# AWM Heater Installation Instructions for the TPI Air Machine

KIT0000619

Heater Kit HTR-150 TPI



KIT0000619	KIT MAGNETIC CHUCK HOLDER	1 each
ASY0000370	HTR-150 HEATER ASSEMBLY	1 each
ASY0000370	HTR-150 THERMOSTAT ASSEMBLY	1 each
HDM0170940	MANIFOLD MOUNTING BRACKET	1 each



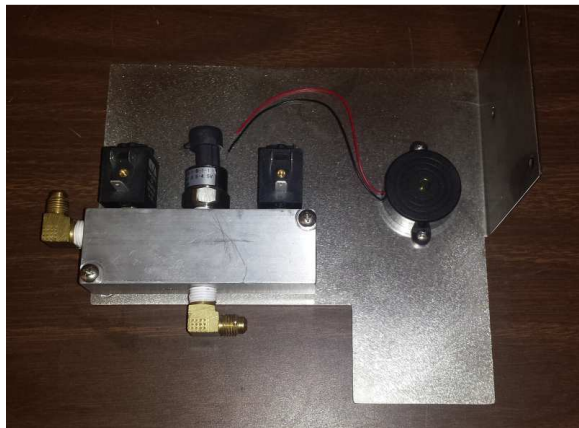
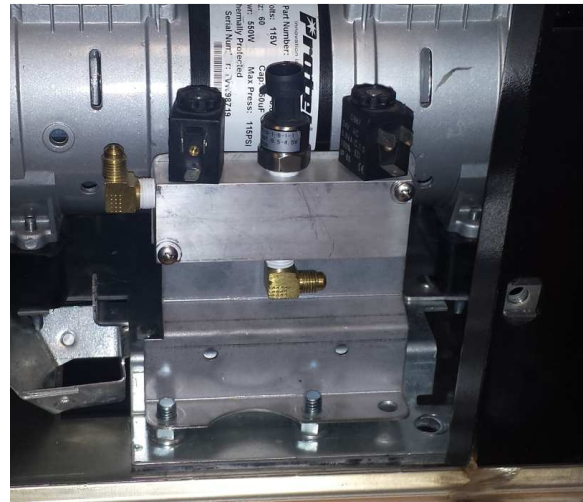
Innovation is our business

4150 Kidron Road, Lakeland, FL 33811  
800.925.8882 • 863.644.5558 • Fax 863.646.5855  
www.protelinc.com

Scan for  
Installation  
Video



Remove the existing digital air manifold and mounting bracket. Remove the manifold and/or buzzer from the original mounting bracket.



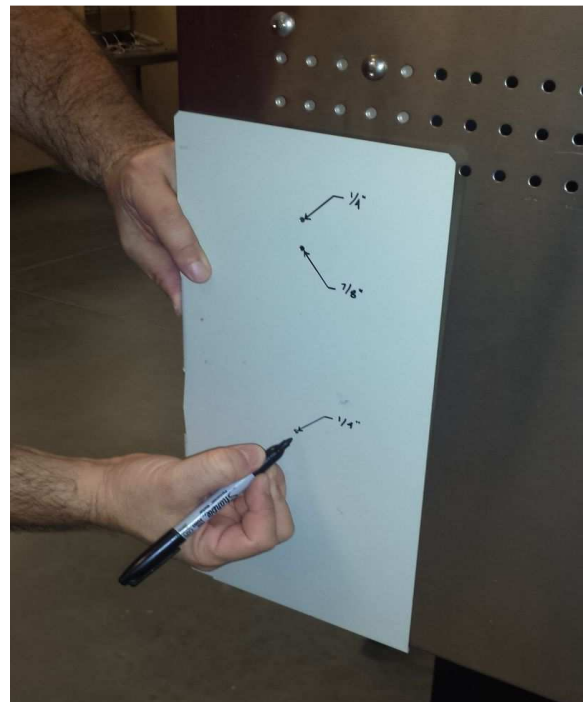
Install the digital air manifold and buzzer on the new mounting bracket supplied with the heater kit.

Set the manifold assembly aside.

Align the drill template supplied with the heater kit on the front and bottom edges of the right side of the enclosure as shown.

Use the template to mark the three hole locations to be drilled.

Drill each hole to the size noted on the drill template. Use a stepped drill bit or hole punch/hole saw to drill the 7/8" hole.



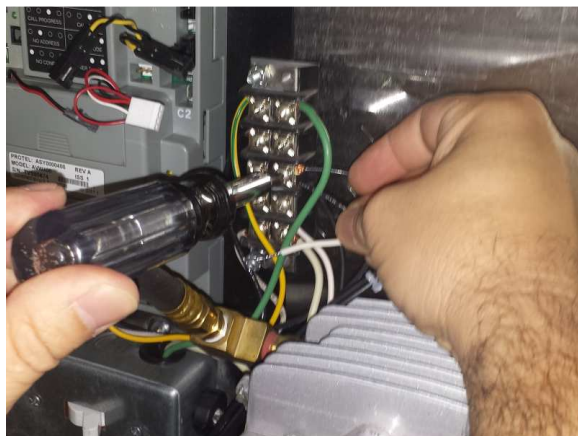
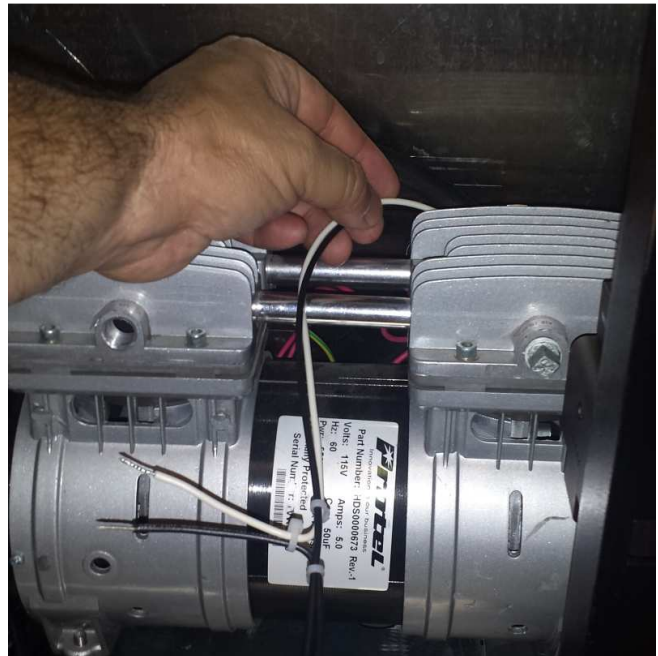
Temporarily install the chuck holder by hand tightening one of the 10-32 lock nuts provide on the chuck holder's top mounting stud.



Use the slot on the top of the heater mounting bracket to locate the heater assembly. The chuck holder's lower mounting stud should pass through the heater mounting bracket. Install the second lock nut on the lower stud as shown then tighten both lock nuts.



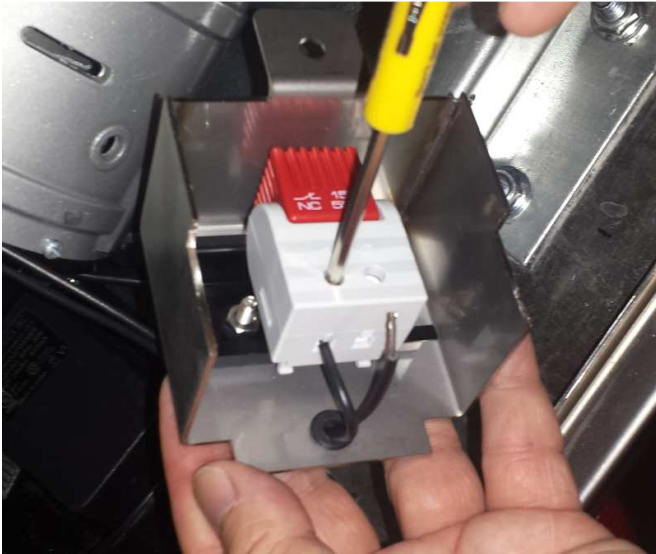
Route the heater's power cable behind the compressor as shown.



Connect the power cable.

With the lower blocker plate installed, position the thermostat and mark the mounting hole location. Remove the blocker plate and drill a 1/4" hole at the marked location.

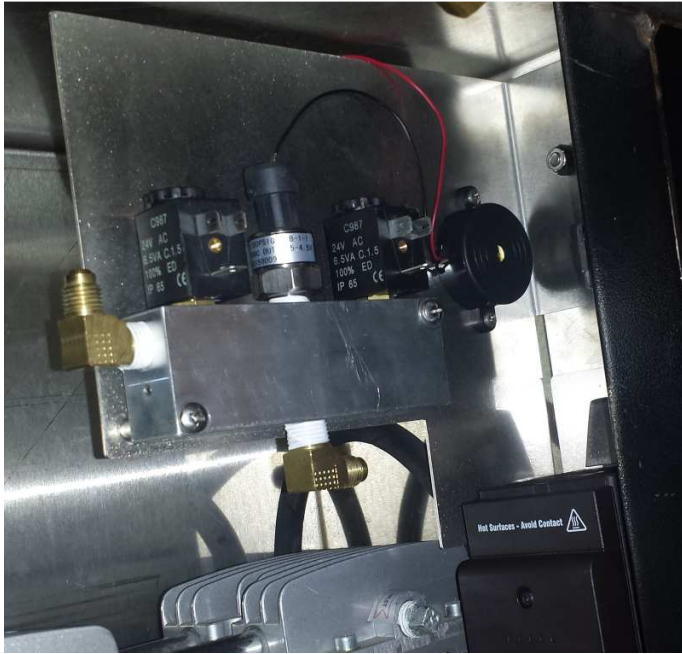




Pass the power cable through the grommet in the thermostat bracket and connect as shown.

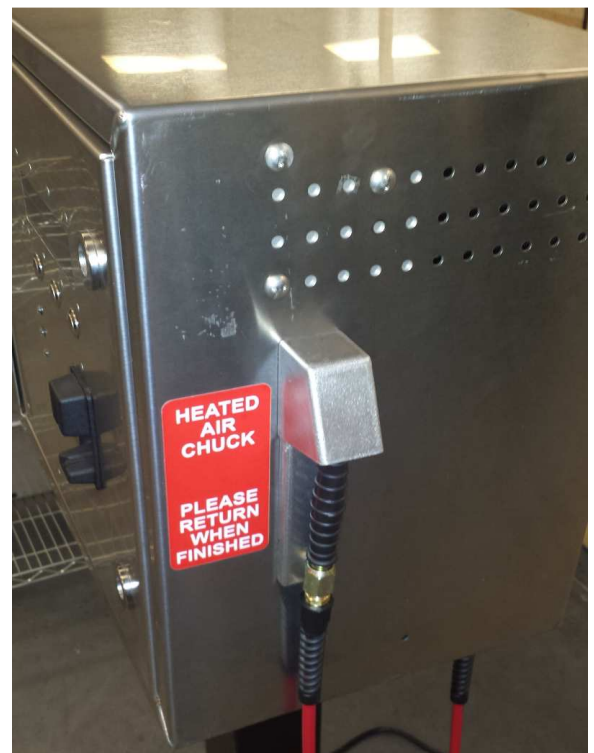
Install the thermostat and bracket on the blocker plate and re-install as shown.

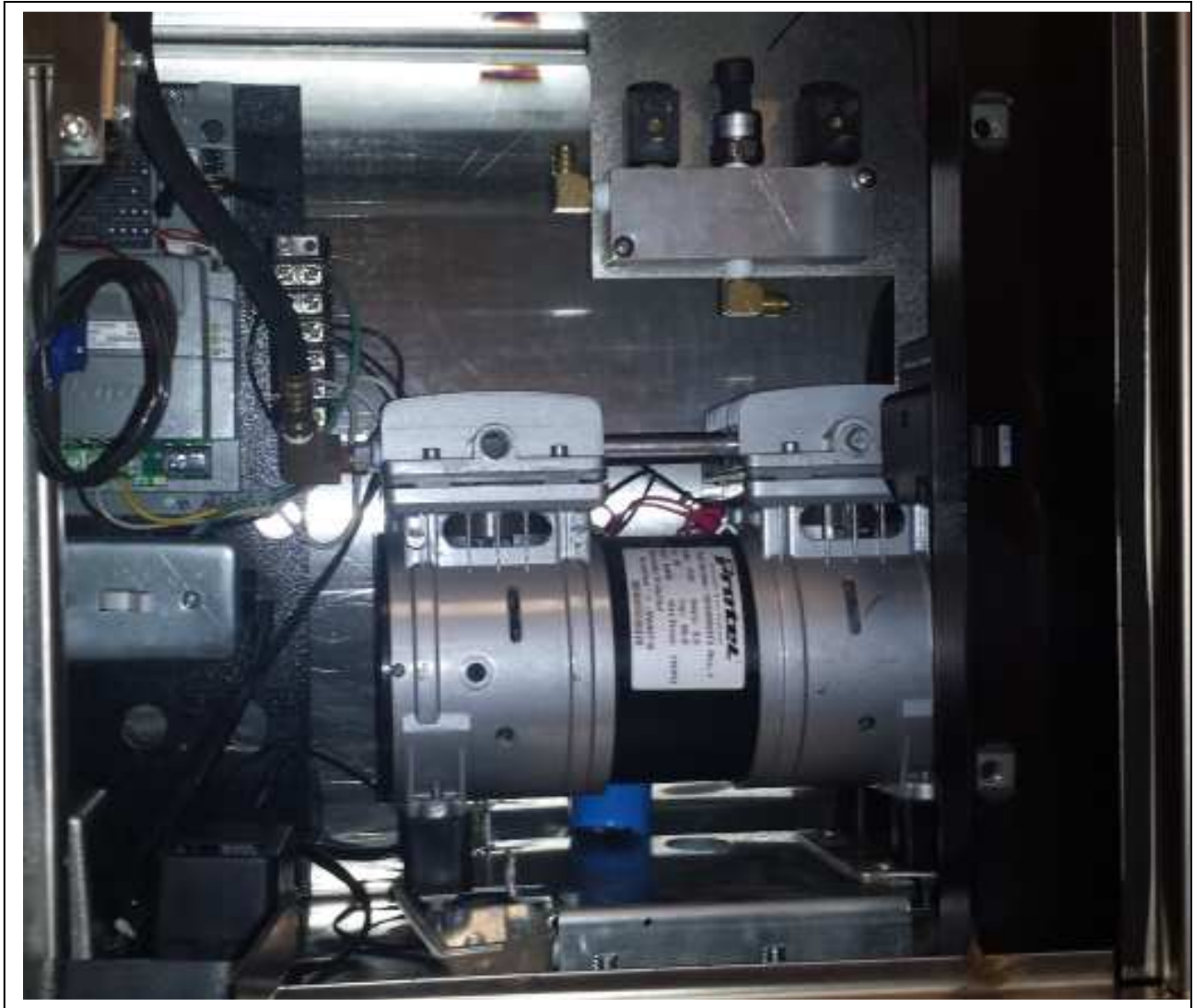




Install the manifold above the heater using three of the existing vent holes.

Note the location of the manifold mounting screws.





Complete heater kit installed in a TPI Air Machine.